



Key features

- HNIL, EMC reached level IV
- Low ripple and noise
- Output overload protection ,short circuit protection
- High efficiency, high density, fine quality and low price
- Industrial product design
- Lower power, RoHS
- 100% test and work
- 6 years product warranty

HM100 - DXXYY series is specially designed for high-end CNC equipment and medical equipment in the dual voltage switch power supply that offered by Zhongyiguang, this series has the AC/DC power supply, wide input voltage range, high reliability, low power consumption, high security isolation, etc. It is widely used in numerical control equipment and electric instrument, medical products, etc., which requires a high degree of stability of each voltage, and the size is demanding, and it is highly demanding for EMC.

Electrical specifications

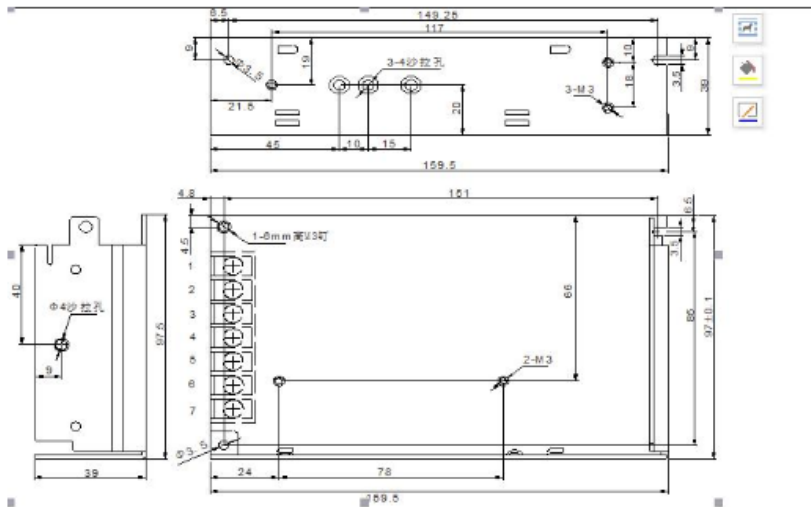
Model	Input voltage	Output Power(W)	Output voltage(V1)	Output current(A1)	Output voltage(V2)	Output current(A2)	Ripple (mv)	Efficiency (%)
HM100-D24V5-5V3	90-264VAC	100	24.5	2.5	5.3	9	100	82

General features

Output	Output voltage accuracy	±2.0%	
	Source effect	±1.0%	5V(±2.0%)
	Load effect	±1.0%	
	Starting time (TYP)	10ms/230VAC	30ms/115VAC @100%load
	Output hold time (TYP)	40ms/230VAC	15ms/115VAC @100% load
Input	Input voltage range	90-264VAC (110-380VDC)	
	Input frequency range	47 ~ 63Hz	
	Input current(TYP)	1.9A / 115VAC	0.96A / 230VAC
	Inrush current (TYP)	Cold boot 60 A / 230 VAC	
	Leakage current(TYP)	< 1mA at 230VAC/50Hz	
Protection	Over-current, over-voltage and short circuit protection, automatic recovery after troubleshooting		
Work	Operating Temperature	-40 ~ +70 °C(According to the output load derating)	

environment	Humidity	85% .RH max
	Storage Temperature	-40 ~ +85, 10 ~ 95% RH
	Temperature coefficient	0.03%/ (0~ 50°C)
	Vibration coefficient	10~500Hz,2G10min./1cycle, 60min.each along X,Y,Z axes
Safety and EMC (Note:3)	Safety Standard	Conform to UL1012,EN60950,UL60950
	I/O-Isolation voltage	I/P-O/P : > 3.0KVAC I/P-FG:1.5KVAC O/P-FG:0.5KVAC
	Isolation resistance	I/P-O/P,I/P-FG,O/P-FG:> 100M Ohms/500VDC 25°C 70% RH
	EMI / RFI conducted	EN55011, EN55022 (CISPR22) CLASS B (Note: See the application circuit for details)
	ESD	IEC/EN 61000-4-2 level 4 8kV/15kV (Note: See the application circuit for details)
	RF	IEC/EN 61000-4-3 (Note: See the application circuit for details)
	EFT	IEC/EN 61000-4-4 level 4 4kV (Note: See the application circuit for details)
Others	SURGE	IEC/EN 61000-4-5 level 4 2kV
	MTBF	268K hrs min. MIL-HDBK-217F(25)
Notes	Dimension	159*99*38mm (L*W*H)
	<ol style="list-style-type: none"> All parameters NOT specially mentioned are measured at 230VAC input, rated load and 25 of ambient temperature Ripple & noise are measured at 20MHz of bandwidth by using a 300mm twisted pair-wire terminated with a 0.1uf & 47uf parallel capacitor The power supply is considered a component which will be installed into a final equipment.The final equipment must be re-confirmed that it still meets EMC directives 	

Dimension



Terminal	Definition	
1	AC(L)	AC input
2	AC(N)	AC input
3	FG	Chassis earth
4	COM1	Negative output1
5	+V1	Positive output1
6	COM2	Negative output2
7	+V2	Positive output2

Block diagram